

CATALOG OF THE
20TH AND 21ST CENTURY
STAMPED ENVELOPES
AND WRAPPERS
OF THE
UNITED STATES



Fourth Edition
2016

Dan Undersander, Editor

Editorial Board: Joe Pryluck, Thomas Galloway, Bill Lehr, Porter Venn, Edward S. Heir, Dave Kandziolka, Bob Thompson, Kirk Wolford, Philip Stevens, Bill Geijsbeek, Ross Towle

Published by:

The United Postal Stationery Society, Inc.

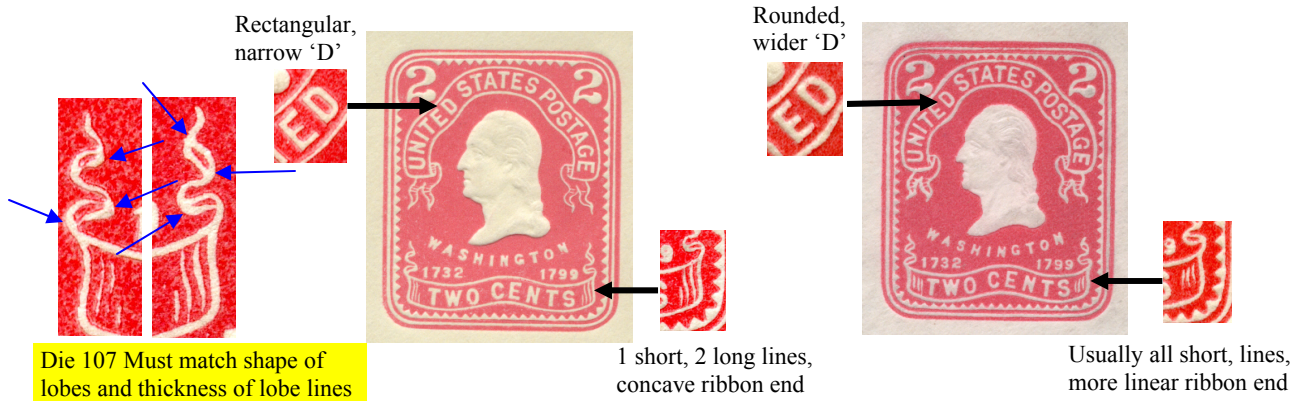


Regular Issue Die Identifier

The Hartford Issues 1903 to 1907



Die 106



Die 107 Must match shape of lobes and thickness of lobe lines

Die 107 Lobes (above the ribbon ends) are identical to above images including shape, orientation and thickness of lines; one short and two long lines of shading at right end of ribbon; these lines taper so as (usually) not to connect to the ribbon border lines; ribbon ends are somewhat concave; the 'D' in 'UNITED' is narrow and almost rectangular; teeth of the inner frame line are uniform in size and shape and their bases are well aligned.

Die 110 (Recut) Differs from Die 107 in some, but not all, of the following characteristics: shape, orientation and line thickness of the lobes above the ribbon ends vary; shading lines at each end of the ribbon vary in number, are often short and often touch ribbon border lines; ribbon ends are more linear than Die 107; lettering throughout is heavier than Die 107; the 'D' in 'UNITED' is more rounded and wider than in Die 107.

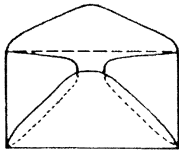
Die 107 is the original two cents design and Die 110 represents a family of recut designs. There are just under 200 known varieties of recuts, resulting from multiple retouching of the working dies due to heavy wear during envelope production. Most of recuts are easily identifiable, though a couple are quite similar to Die 107. Descriptions of individual recut die varieties can be found on the website at www.upss.org/Additions to US Catalogs. Key areas of differences between Die 107 and Die 110 involve traits listed above as well as the misalignment of the teeth and various alterations to the letters and numbers. Die 107 is very consistent while Die 110 is variable, therefore any stamp that does not match the image of Die 107 is Die 110.



Die 108

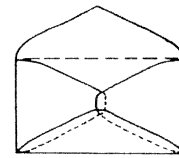


Die 109



High Back

Dies of The Mercantile Issue 1907 to 1919



Low Back

To use this chart for envelope identification:

- 1) Determine the envelope size.
- 2) Determine the knife type.
- 3) Determine the paper color.
- 4) Use the chart to see which dies exist with the criteria from above.
- 5) Determine the watermark, this may narrow die choices.
- 6) If more than one die, look up the few dies that match the criteria.

Abbreviations

C= concave sides of top flap (such as Knife 54.)
 R/L = Right Flap over Left Flap
 L/R = Left Flap over Right Flap
 HB = High Back
 LB = Low Back
 LB Rotary = Low Back with "feather" cuts and more square side flap ends.

1907 OVAL			1c GREEN								
MERCANTILE DIES			LAID PAPER				WOVE PAPER				
SIZE	KNIFE		111	112	113	114	111	112	113	114	
7	34	HB	W A		W A						
	35	LB					W				
8	41	HB	W A	W	W A		W				
	42	LB	W A			W	W A				
10	54	C LB R/L	W		W				M		
	54u		W		W				M		
	55u	C LB L/R	W								
	57	HB	W A	W A	W A		W A		W		
	57o		W A	W A	W A					M	
	57u		W A	W							
	57x							W			
	58	LB ROTARY	W			W A					W A
58w										W A	
59	LB	W A		W A		W A			W		
13	78	HB	W A O B	W A O B	W A O B				W A		
	78o		W A O B	O	W A B						
	78u						W				
	79	LB ROTARY	A O B			W A O B					W A O B
	79u						W				W A O B
	79w										W O
	80	LB	W A O B		W		W A O B				
80u						W A O B					
16	88	LB R/L	W		W						
17	89	LB R/L	W				W				
23	106	HB	W A	W A	W		W A			W	
	106o		W A		W						
	106u		W A	W A	W A		W A		W	W A	
	110	LB ROTARY					A				
	112	LB					W A				
	112u						W A				
WRP	W5	Sqr comers		M	M					M	
	W9	Rnd comers								M	

Paper Colors
 W = White
 A = Amber
 B = Blue
 O = oriental buff (orange-brn)
 M = Manila

Dies of The Mercantile Issue 1907 to 1919

To use this chart for envelope identification:

- 1) Determine the envelope size.
- 2) Determine the knife type.
- 3) Determine the paper color.
- 4) Use the chart to determine which dies exist for your envelope.
- 5) Determine the watermark, this may narrow die choices.
- 6) If more than one die, look up the few dies that match the criteria.

Abbreviations

R/L = Right Flap over Left Flap
 L/R = Left Flap over Right Flap
 HB = High Back
 LB = Low Back
 LB Rotary = Low Back with
 "feather" cuts and more
 square side flap ends.

Paper Colors

W = White
 A = Amber
 B = Blue
 O = oriental buff
 (orange-brn)
 M = Manila

1907 OVAL MERCANTILE DIES			2¢ LAID PAPER									
			BROWN RED			CARMINE						
SIZE	KNIFE		115	116	117	115	116	117	118	119	120	121
3	8	R/L	W			W	W			W		
	10	L/R				W						
7	34	HB	W A O B			W A O B	W B	W	W	W		
	34u					W						
8	41	HB	W A O B		W	W A O B	W A O B	W O B	W A O B	W A		
	42	LB				W A O B	W	W A O B		W A O B		
9	45	HB	W A			W A	W A	W		W		
10	57	HB	W A O B	W A O B	W A O B	W A O B	W A O B	W O	W A O B	W A O B		
	57u		W				W					
	58	LB ROTARY									W A O B	M
	59	LB				W A O B	W A O B	W A O B	W A	W A O B		W A
11	64	HB	W A O B			W A O B	W A O B			W A O B		
13	78	HB	W A O B		W A O B	W A O B	W A O B	W A B	W A O B	W A O B		
	78u					W			B			
	79	LB ROTARY				W A O B					W A O B	
	80	LB				W A O B	W A	W A B		W A O B		
14	84	R/L	W			W	W A					
16	88	R/L	W			W	W			W		
17	89	R/L				W				W		
21	100	HB	W A O B			W A O B	W A O B	W A O B	W O	W A O B		
23	106	HB	W A		W A	W A	W A	W A	W A	W A		
	106u						A					
	110	LB ROTARY									W A	
	112	LB				W						
25	124	HB	W A			W A	W A	W A	W A	W A		
WP	W6		M			M	M			M		M
	W8											

Brown Red only occurs with watermarks 15 and 15A on white paper and only watermark 15 on colored papers.
 Carmine occurs with all watermarks, including 15 and 15A.

Dies of The Mercantile Issue 1907 to 1919

To use this chart for envelope identification:

- 1) Determine the envelope size.
- 2) Determine the knife type.
- 3) Determine the paper color.
- 4) Use the chart to determine which dies exist for your envelope.
- 5) Determine the watermark, this may narrow die choices.
- 6) If more than one die, look up the few dies that match the criteria.

Abbreviations

- TF xx = Height of top flap in mm.
- R/L = Right Flap over Left Flap
- L/R = Left Flap over Right Flap
- HB = High Back
- LB = Low Back
- LB Rotary = Low Back with "feather" cuts and more square side flap ends.

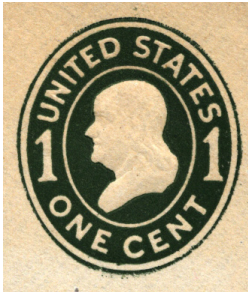
1907 OVAL			2¢ WOVE PAPER												
MERCANTILE DIES			CARMINE								ORANGE RED				
SIZE	KNIFE		115	116	117	118	118A	119	120	121	122	115	121	122	116
7	34	HB	W												
	35	LB	W						W						
8	41	HB	W A O B		W		B					W			
	42	LB	W A O B	W				W		W A O B	W	W	W A		
9	45	HB	W												
	46	LB	W												
10	57	HB			W	W A									
	58	LB ROTARY							W A O B M						
	59	LB TF 50	W A O B	W A B	W A	W A		W B		W A O B M	W	W A O B	W A O B	W	W
	59u												B		
	60	LB R,TF 54					W A O B								
11	64	HB	W												
	65	LB	W A							W A			W		
13	78	HB	W A	W O B		W A		W							
	79	LB ROTARY							W A O B						
	80	LB	W A O B	W	W A					W A B	W O B	W A	W	W	B
	81	LB R,TF 59					W A B								
14	84	LB R/L	W												
17	89	LB R/L	W												
21	100	HB	W A O B		W B	W A O B				W A O B			A		
23	106	HB	W A	W A	W	W A				W					
	110	LB ROTARY							W A						
	110w								W A						
	112	LB	W A	W A		W		W		W					
25	124	HB	W A	W A	W A	W A									
	124u	HB			A										
WP	W8		M					M			M				

Paper Colors

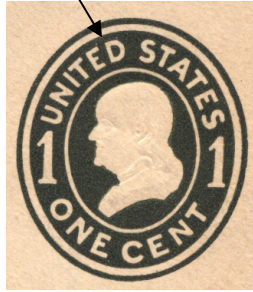
- W = White
- A = Amber
- B = Blue
- O = oriental buff (orange-brn)
- M = Manila

Dies of The Mercantile Issue 1907 to 1919

If you have entire envelopes, identification is easier following the steps using the charts on the preceding pages to reduce the number of dies to be considered for any particular item.



Die 111(A) Wide 'D' (2¼ mm) in 'UNITED'; the 'O' of 'ONE' is circular and the 'NE' are not both parallel; both 'S's' in 'STATES' are narrow.



Die 112(B) Narrow 'D' (2 mm) in 'UNITED'; the 'O' of 'ONE' is circular and the 'NE' are not both parallel; both 'S's' in 'STATES' are narrow.



Die 113 (C) The 'O' of 'ONE' is oval; both 'S's' in 'STATES' are broad and have long ends. The DAYTON die.



Die 114(D) Back of the bust forms an angle at the 'T' of 'CENT'; the 'O' of 'ONE' is circular and the 'NE' are parallel.

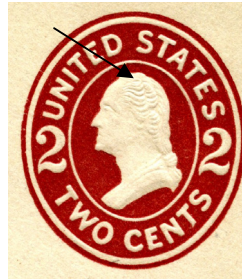


Brown Red

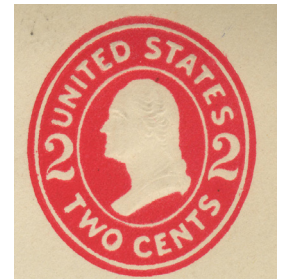


Carmine

Die 115(A) The 'O' in the 'TWO' and the 'C' in 'CENT' are elongated ovals; all the 'S's' are narrow (approx. 1¾ mm); flat spot on top of head; the front end of the bust is broad and of even width.



Brown Red



Carmine

Die 116(A2) Recut locks of hair; there are two distinct locks of hair clearly divided at the top; a separate wedge-shaped lock in the center points upward; the bust and the lettering are as in die 115(A).

Brown Red color only occurs with dies 115, 116, and 117.

Dies 115 to 119 have broad front end of bust.

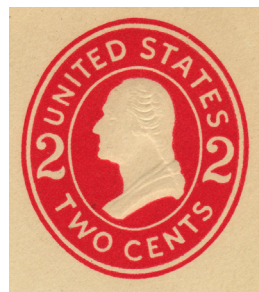


Brown Red



Carmine

Die 117(B) The 'O' of 'TWO' is circular; the lettering is heavy; top of head rounded; the front end of the bust is broad and of even width; the bust is usually not well embossed.



Die 118(C) The 'O' of 'TWO' is circular; the head lines are altered and the horizontal hair lines strikingly visible; the front end of the bust is broad and of even width; the lettering is fine and clean cut; die is 29.6 mm in height.



Die 118A(C2) Similar to Die 118(C); die is 30.6 mm in height; the die appears to be leaning to the left; on wove paper only.

Dies of The Mercantile Issue 1907 to 1919



Dies 115 to 119 have broad front end of bust

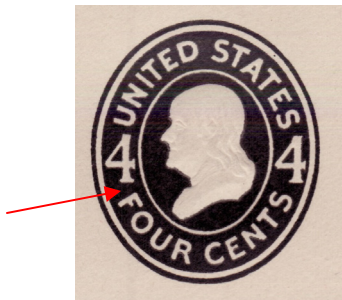
Narrow front end of bust

Die 119(D) All the 'S's are wide (2 mm or more); otherwise like die 115(A); the front end of the bust is broad and of even width.

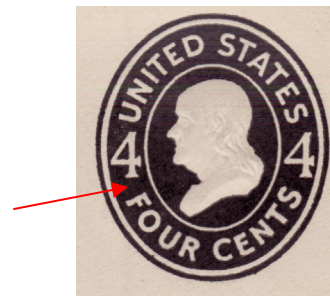
Die 120(E) The base of the bust front tapers distinctly and the end is rounded. Not on high back envelopes.

Die 121(F) The upright line of the right figure '2' tapers to a very thin line where it meets the base of the numeral; the profile of the face often appears as an irregular line with a pointed nose; the upper corner of the front end of the base is usually, though not always, cut away in varying degrees; hair arrangements as in Die 115(A).

Die 122(G) The upright line of the right figure '2' tapers to a very thin line where it meets the base of the numeral; hair arrangement as in Die 116(A2); the lower stroke of the 'S' of 'CENTS' is a straight line; the front end of the bust is narrow; with irregular lower portion and the upper corner is cut off; little to no projection of queue below bust.



Die 123(A) The 'F' of 'FOUR' is only 1 mm from the left figure '4.'



Die 124(B) The 'F' of 'FOUR' is 1¾ mm from the left figure '4.'



Die 125(A) Large 'F' of 'FIVE' (2¾ mm tall).



Die 126(B) Small 'F' of 'FIVE' (2½ mm or slightly less in height).

Circular Die Quick Sort

If you have entire envelopes, it is easier to follow the steps below and/or use the charts on the following pages to reduce the number of dies to be considered for any particular item.

1 Cent Green Dies



Narrow Wide

- 1) Sort out dies with narrow C of CENTS Die 131(E)
- 2) Then sort envelopes into three piles by envelope backs:
 - 1st pile – all high backs and low backs with rounded ends**
UNITED closer to inner circle - Die 127(A)
Lump of hair at back of neck, UNITED centered - Die 129(C)
 - 2nd pile – low backs with very narrow, square cut ends**
Die 128(B)
 - 3rd Pile – low backs with wide square cut ends - Rotary knives with ragged edges**
Die 130(D)

2 Cents, 3 Cents

3¢ dark violet is on watermarks 19 & 20 only
3¢ purple is on watermarks 28 and higher only

- 1) Sort out dies with narrow C of CENTS 2¢ Die 142(I), 3¢ Die 147(I) as shown above.
- 2) Then sort envelopes into three piles by envelope backs:
 - 1st pile – all high backs and low backs with rounded ends**
2's slope right –
Short top stroke on T, clear cut letters – 2¢ Die 140(H), 3¢ Die 146(H)
Long top stroke on T – 2¢ Die 141(H2), No 3¢
Remainder, with broad letters – 2¢ Die 134(A), 3¢ Die (143(A)
All 3¢ low backs are die A. Most 2¢ low backs are Die A. Size 10 2¢ on white may be Die H (UPSS # 2264) but uncommon.
 - 2nd pile – low backs with very narrow, square cut ends**
Large envelopes (sizes 21 & 22) – 2¢ Die 137(D), No 3¢
Size 13 envelopes – 2¢ Die 135(B), No 3¢
Size 10 envelopes –
Wide inner circle – 2¢ Die 135(B), No 3¢
Narrow inner circle – 2¢ Die 136(C), No 3¢
 - 3rd Pile – low backs with wide square cut ends - Rotary knives with ragged edges (8¾ mm head)**
TS of CENTS widely spaced (1½ mm) - 2¢ Die 139(F), 3¢ Die 145(F)
TS of CENTS closely spaced (1 mm) – 2¢ Die 138(E), 3¢ Die 144(E)
NOTE: there are four scarce items with rotary knives that are Die A
On white, size 10, watermark 22 (UPSS # 2213)
On amber, size 10, watermark 22 (UPSS # 2313)
Size 13, watermark 22, (UPSS # 2319)
Size 23, watermark 19 (UPSS # 2331)

The Circular Dies 1915 to 1950

1915 CIRCULAR DIES			1¢ GREEN					1½¢ BROWN	
SIZE	KNIFE		127	128	129	130	131	132	133
7	35	LB	W						
8	41	HB	W		W	B			W A B
	41x								W
	42	LB	W A B					W A B	
10	54	C LB	W						
	54u		W						
	57	HB	W A B		W A B		W A B	W A B	W A B
	57u		W A B				W A B	W A B	
	57x		W A B		W A B		W A B	W A B	W A B
	57xu		W A B						
	57w		W				W B	W	
	57wu						W B		
	58	LB ROTARY	A			W A B			
	58u					W			
	58w					W A B			
	58wu	LB				W			
	59	LB	W A B M G U					W A B	
	59u		W A B M					W B	
59w		W A B					W A B		
59wu		W A B					W B W		
13	78	HB	W A B		W A B		W B	W A B	W A B
	78u		W A B				W A B	W A B	
	78x		W A B		W A B		W A B	W A B	W A B
	78xu		W				B	A B	
	78w		W				W		
	78wu						W		
	79	LB ROTARY	A			W A O B			
	79u					W			
	79w					W A O B			
	79wu					W B			
	80	LB	W A O B					W A B	
	80u		W A O B					W B	
	80w		W A O B					W A B	
	80wu		W A B					W B	
17	89		W						
	89x		W						
21	100	HB							
	100x		W		W		W		
23	106	HB	W A B		W A B		W A B	W A B	W
	106u		W A B				W A B	W A B	
	106x		W A B		W		W B	W A B	W
	106xu		W				W A	A	
	106w		W				W	W	
	106wu						W		
	110	LB ROTARY				W			
	110w					W A			
	111u	LB R, TF 63		W A					
	112	LB	W A B				W B	W A B	
	112u		W A B				W A B	W B	
	112w		W A B				W A B	W A B	
	112wu		W A B				W A B		
	116	HB, wmks 42 & 43	W					W	
116x		W					W		
116w		W					W		
116wu		W					W		
WP	W9		M G U	M			M		

To use this chart for envelope identification:

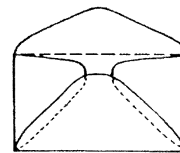
- 1) Determine the envelope size.
- 2) Determine the knife type.
- 3) Determine the paper color.
- 4) Use the chart to determine which dies exist for your envelope.
- 5) Determine the watermark, this may narrow die choices.
- 6) If more than one die, look up the few dies that match the criteria.

Abbreviations

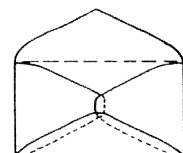
C= concave sides of top flap (such as Knife 54.)
 TF xx = Height of top flap in mm.
 R/L = Right Flap over Left Flap
 L/R = Left Flap over Right Flap
 HB = High Back
 LB = Low Back
 LB Rotary = Low Back with "feather" (R) cuts and more square side flap ends.
 R = Rough cut edge

Paper Colors

W = White
 A = Amber
 B = Blue
 O = Oriental Buff (orange-bm)
 M = Manila
 G = Glazed brown
 U = Unglazed bm



High Back

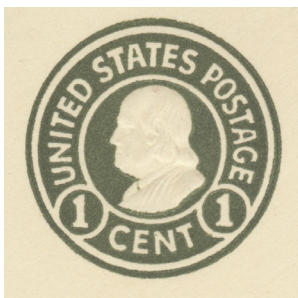


Low Back

Size 25 occurred only with 1¢ Die 127 and 1½¢ Die 132.

The Circular Dies 1915 to 1950

If you have entire envelopes, identification is easier following the steps using the charts on the preceding pages to reduce the number of dies to be considered for any particular item.



Die 127(A) 'UNITED' small and closer to inner circle; 'E' of 'CENT' closer to inner circle than 'N' of 'CENT'; heavy, well-formed lettering; 'NT' of 'CENT' very close together (4¼ mm across bottom of 'NT'), most noticeable at the top.



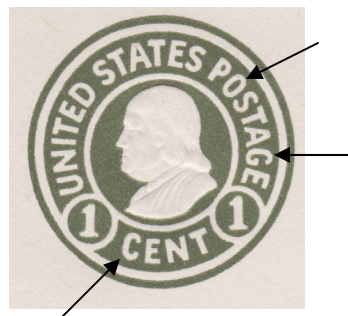
Die 128(B) 'UNITED' centered between circles; 'NT' of 'CENT' and 'UN' of 'UNITED' are large; first 'S' of 'STATES' larger than last 'S'; outlines of lettering is sharp. Used only for ungummed, size 23 envelopes with watermarks 19 and 20.



Die 129(C) hair projects strongly at back; 'C' of 'CENT' near left circle; 'CENT' widely spaced; 'NT' of 'CENT' measures 4¼ mm across the bottom; used only for gummed, high back envelopes without precancel and wrapper.

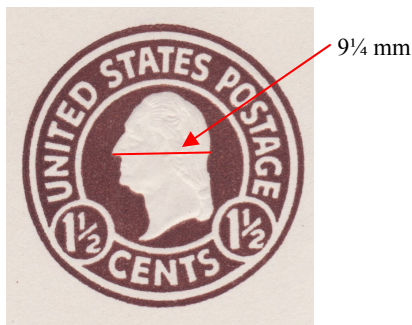


Die 130(D) 'UNITED' closer to outer circle; 'C' of 'CENT' far from left value circle; 'NT' of 'CENT' measures 4¾ mm across the bottom; side flaps have square ends (20 mm); envelopes tend to have rough edges from Kenny rotary press.

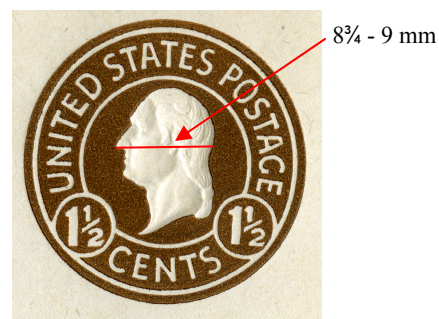


Die 131(E) The letters 'C', 'G' and 'O' are very narrow and oval shaped.

1½¢ dies were made from 2¢ master dies with little other than the values changed. Die 132, for Huckins Rotary Press, was made from Die 134(A) and Die 133, for O'Connell flat bed press, was made from Die 141(H2).



Die 132(A) Head large (9¼ mm from tip of nose to back of head); left figure '1' tilts to left; heavy lettering; all 'T's have shorter tops (1½ mm).



Die 133(H2) Head small (8¾ to 9 mm from tip of nose to back of head). Right figure '1' tilts to right; fine lettering; all 'T's have long tops (1¾ mm). Not used for window envelopes.

The Circular Dies 1915 to 1950

1915 CIRCULAR DIES			2¢ CARMINE											
SIZE	KNIFE	LAID	WOVE PAPER											
			134	134	135	136	137	138	139	140	141	142		
7	35 LB	W	W											
8	41 HB	A	W A B							W	B	W A B		
	41x		W							W		W		
	42 LB	W	W A O B											
9	46 LB	W	W											
10	57 HB		W A B					W				W A B M	W A B	W A B
	57x		W A B									W A B	W A B	W A B
	57w		W									W		
10	58 LB ROTARY		W A					W A O B	W	B				
	58w		W					W A O B	W	B				
	59 LB	A	W A O B							W				W A B
59w		W A O B											W A B	
60	LB R,TF 54			W A	B	W B								
11	65 LB		W A											
13	78 HB		W A B							W A B		W A B	W A B	
	78u		W											
	78x		W A B							W A B		W A B	W A B	
	78w		W										W	
	79 LB ROTARY		A					W A O B	W A O B					
79w							W A O B	W A O B						
80	LB TF 54	A	W A O B							W				W A B
80w			W A O B											W A B
81	LB R,TF 59			W A O B										
14	84	W	W							W				
	84x		W							W				
17	89		W											
	89x		W											
19	91 HB		W A B											W
	91x		W A B											
20	92w LB		W A B											W A B
	93w HB		W											
21	100 HB	A	W A O B							W A O B		W A B	W A B	
	100u		W											
	100x		W A B							W A		W A B	W	B
	100w		W											
	103 LB		W A B											W A B
103w		W A B											W A B	
104	LB R,TF 60					W A O B								
23	106 HB		W A B				W			W A B		W A B	W A B	
	106u		W											
	106x		W A B							W A B		W A B	W A B	
	106xu		W											
	106w		W											W
	110 LB ROTARY		A						W A B					
110w								W A B						
111	LB R,TF 63					W A								
112	LB		W A B											W A B
112w			W A B											W A B
116	HB, wmks		W											W
116x	42 & 43		W											W
116xu			W											W
116w			W											W
25	124 HB		W A B							W A B		W A	W	
	124u		W											
	124x		W A B							W	B	W A B	W	
WP	W8		M	U										

To use this chart for envelope identification:

- 1) Determine the envelope size.
- 2) Determine the knife type.
- 3) Determine the paper color.
- 4) Use the chart to determine which dies exist for your envelope.
- 5) Determine the watermark, this may narrow die choices.
- 6) If more than one die, look up the few dies that match the criteria.

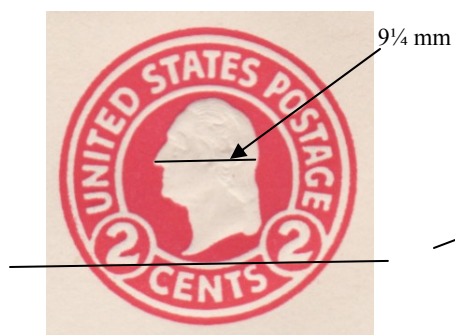
Abbreviations

TF xx = Height of top flap in mm.
 HB = High Back
 LB = Low Back
 LB Rotary = Low Back with "feather" cuts and more square side flap ends.

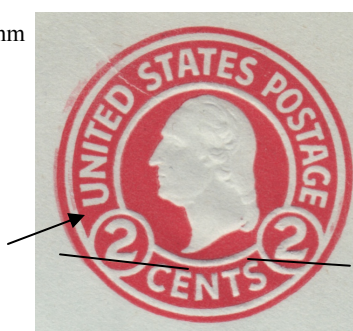
Paper Colors

W = White
 A = Amber
 B = Blue
 O = Oriental buff (orange-brn)
 M = Manila
 U = Unglazed brn

The Circular Dies 1915 to 1950



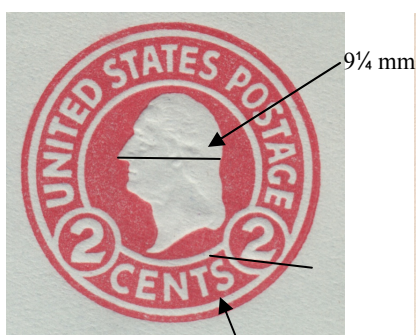
Die 134(A) Head large (9 1/4 mm from tip of nose to nape of neck); base line of both '2's horizontal; 'E' of 'CENTS' closer to inner circle than the 'N' of 'CENTS'; heavy well-formed lettering.



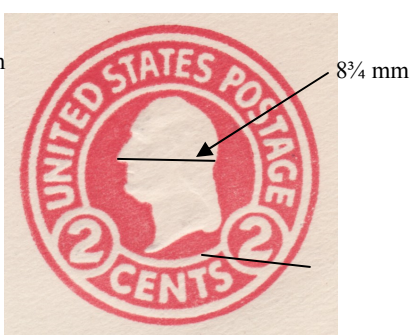
Die 135(B) Head large (9 1/2 mm from tip of nose to nape of neck); 'U' of 'UNITED' far from value circle (1 mm); the base line of both figure '2's slopes downward to the right.



Die 136(C) Head large (9 1/2 mm from tip of nose to back of head); inner circle much thinner than the outer; lettering and numerals thin and clear cut; both '2's slope downward to the right; 'U' far from left circle of value.



Die 137(D) Head large (9 1/4 mm from tip of nose to back of head); 'C' of 'CENTS' close to circle; baseline of right figure '2' slants downward to the right; left numeral '2' larger than right '2'; 'T' and 'S' of 'CENTS' close together at bottom (<1 mm); lettering heavy and well-formed.



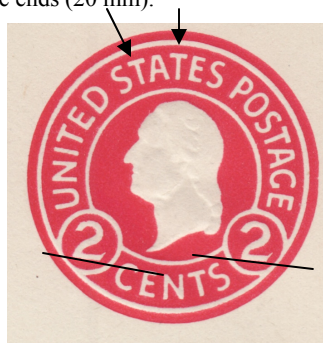
Die 138(E) Head small (8 3/4 mm from tip of nose to back of head); 'T' and 'S' of 'CENTS' close together at bottom (<1 mm); 'N' of 'CENTS' is wide; baseline of right figure '2' slopes downward to the right; nose somewhat pointed; side flaps have square ends (20 mm).



Die 139(F) Head small (8 3/4 mm); 'T' and 'S' of 'CENTS' widely spaced at bottom (1 mm); the 'N' of 'CENTS' is narrow; baseline of left figure '2' slopes downward to the right; heavy strands of hair resemble bumps; nose bluntly rounded at tip; side flaps have square ends.



Die 140(H) Head is 9 mm wide; clear sharp impression; all 'T's have short top strokes (1 1/2 mm); both figure '2's slope downward to the right (left '2' slopes more strongly); 'U' of 'UNITED' is 1/2 mm from left value circle.



Die 141(H2) Similar to Die 140(H) but 'T's have long top strokes (1 3/4 mm).



Die 142(I) Both large (9 1/4 mm) and small (8 3/4 mm) heads (from tip of nose to nape of neck); The letters 'C', 'U', 'O' and 'G' are very narrow and oval shaped.

The Circular Dies 1915 to 1950

1915 CIRCULAR DIES			3¢ DARK VIOLET (wmks 19 & 20)				3¢ PURPLE (wmks 28 to 43)			
SIZE	KNIFE		143	144	145	146	143	J	146	147
7	35	LB	W							
8	41	HB	W A							
	42	LB	W A O B							
9	46	LB	W							
10	57	HB	W A			W A	W A B	W	W A B	W A B
	57x					W	W A B	W A B	W A B	W A B
	57w						W B			W
	58	LB ROTARY		W A O B						
	58w			W A O B						
	59	LB	W A O B				W A B	W		W A B
	59w		W							
11	65	LB	W A							
13	78	HB	W A			W A	W A B	W A B	W A B	W A B
	78x					W	W A B	W A	W A B	W A B
	78w						W			W
	79	LB ROTARY		W	W A O B					
	79w				W A O B					
	80	LB	W A O B							
	80w		W O				W A B	W		W A B
14	84		W			W				
	84x					W				
17	89		W							
	89x		W							
19	91	HB					W A B	W		
	91x						W A B	A		A
20	92w	LB					W A B			W A B
	93w	HB					W			
21	100	HB	W A O B			W A O B	W A B	W A B	W A B	W B
	100x						W A B	W B	W A B	W A B
	100w						W			W
	103w	LB					W A B			W A B
23	106	HB	A			W A	W A B	W A B	W A B	W A B
	106x					W	W A B	W A B	W A B	W
	106w						W			W B
	110	LB ROTARY			W A					
	110w				W A					
	112	LB	W A							
	112u		W							
	112x		W							
	112w		W A				W A B	W A B		W A B
	116	HB, wmks					W		W	W
	116x	42 & 43 only					W		W	W
	116w						W		W	W
25	124	HB	W A			W A	W A B		W A	
	124x						W A B		W A B	W
	124w									

To use this chart for envelope identification:

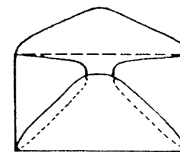
- 1) Determine the envelope size.
- 2) Determine the knife type.
- 3) Determine the paper color.
- 4) Use the chart to determine which dies exist for your envelope.
- 5) Determine the watermark, this may narrow die choices.
- 6) If more than one die, look up the few dies that match the criteria.

Abbreviations

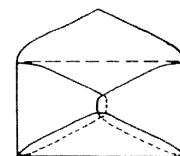
HB = High Back
 LB = Low Back
 LB Rotary = Low Back with "feather" cuts and more square side flap ends.

Paper Colors

W = White
 A = Amber
 B = Blue
 O = Oriental Buff (orange-brn)

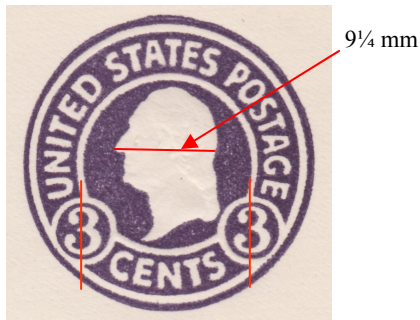


High Back



Low Back

The Circular Dies 1915 to 1950



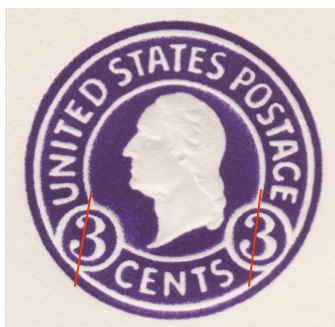
Die 143(A) Head large ($9\frac{1}{4}$ mm from tip of nose to back of head); both figure '3's vertical; heavy well-formed lettering [same as 2¢ Die 134(A)].



Die 144(E) Head small ($8\frac{3}{4}$ mm from tip of nose to back of head) 'T' and 'S' of 'CENTS' close together at bottom; numerals, right '3' slants to the left; nose somewhat pointed [same as 2¢ Die 138(E)]; only occurs as dark violet.



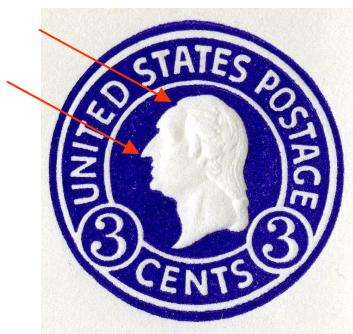
Die 145(F) Head small as Die 144; 'T' and 'S' of 'CENTS' widely spaced at bottom; left figure '3' slants to the left; heavy strands of hair resemble bumps; nose bluntly rounded at tip [same as 2¢ Die 139(F)]; side flaps have square ends (20 mm); only occurs as dark violet.



Die 146(H) Head is 9 mm; clear sharp impression; all 'T's have short top strokes ($1\frac{1}{2}$ mm); both figures '3's slant to the right [same as 2¢ Die 140(H)].



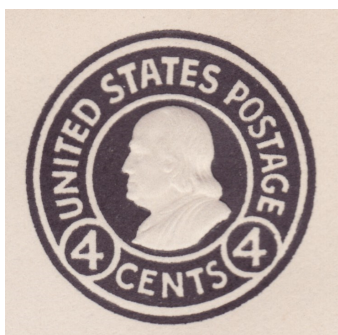
Die 147(I) The letters 'C', 'O', 'U' and 'G' are very narrow and oval shaped [same as 2¢ Die 142(I)]; only occurs as purple.



Die J working die easily confused with Dies 143 and 146. Letters and numbers similar to Die 143; but thin and well-defined; '3's are upright; head is small ($8\frac{3}{4}$ mm) showing additional lock of hair by ear; nose and point of chin are prominent; the head is shorter and wider than the Die 146; the head is flatter at the top and the back is straighter than die 146; the forehead on the Die J head is rounded and bulges outward unlike the flat forehead of die 146; the nose is more pointed than either die and there is a notch between the hairline and the forehead; only occurs as purple.

The history and additional information about the J die is given on p 184 .

The Circular Dies 1915 to 1950



Die 148



Die 149



Die 150

1920 Surcharge Types

2 CENTS

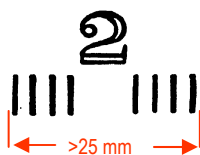
Type 1

Black, Issued at Washington, D.C.

2

Type 2

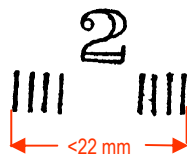
Rose, Issued at Washington D.C.



Type 3

Black

11 city types

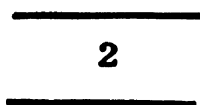


Type 4

Black

30 city types

Previously Surcharge Types 3 and 4 were differentiated based on spacing between vertical bars. However, surcharges were applied by a canceling machine and bar spacing is often not equal and thickness of the bars varies depending on inking. Therefore our recommendation is to sort based on distance from outside edges of end bars. See article in *Postal Stationery* Jan-Feb, 2013 55(1):124-129.



Type 5

Black,

Issued at Duncan, OK

2

Type 6

Black handstamped,
Issued at Frederick, OK

2

Type 7

Black handstamped,

Applied at Daytona, FL over type 4 surcharges

1925 Surcharge Types

1 1/2

Type 8
Solid letters

1 1/2

Type 9
Hollow letters

1
CENT

Type 7A
Intended for revaluing postal cards

The 1926 Sesquicentennial Exposition and 1932 Washington Bicentennial Issues



Die 151 The center bar of 'E' in 'POSTAGE' is shorter than the top bar.



Die 152 The center bar of 'E' in 'POSTAGE' is the same length as the top bar; only on size 10 envelopes.



Die 153



Die 154



Die 155 All letters of 'POSTAGE' align.



Die 156 The 'S' of 'POSTAGE' is raised.



Die 157

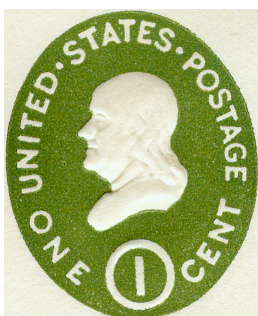


Die 158

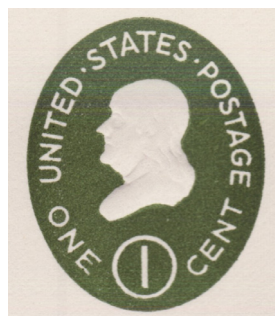


Die 159

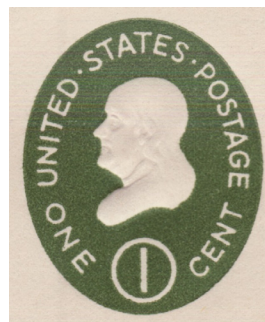
The Oval Dies of 1950 to 1964



Die 160(A) short (3½ mm) and thick '1' in heavy circle; narrow 'U's; narrow 'E's with short center bar; lettering close to outer edge; 'ONE' widely spaced.



Die 161(B) Tall (4½ mm) and thin '1' in thin circle; upper and lower bars of 'E' in 'ONE' are long and 1 mm from circle; 'ONE' closely spaced. Only on watermark 42 or 43 paper.



Die 162(C) Similar to Die 161 but upper and lower bars of 'E' in 'ONE' are shorter and far (1½ mm) from circle; 'ONE' is closely spaced. Only die used for precancelled envelopes.



Die 163



Die 164(A) Small head (9 mm from tip of nose to back of head); Narrow 'U'; small lettering throughout; thick '2' in thick circle; toe of '2' is acute right angle.

9 mm



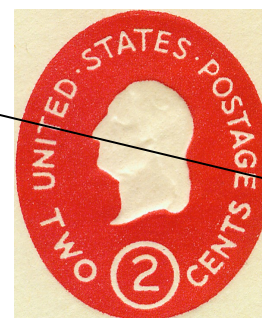
Die 164



Die 165(B) Small head; thin '2' set high in thin circle farther from edge of oval than Die 164; wide 'U'; toe of '2' is almost at right angle; long hook on '2'; line through left stand of 'N' in 'UNITED' and stand of 'E' in 'POSTAGE' goes considerably below tip of chin; 'N' of 'UNITED' is tall; 'O' of 'TWO' is high.

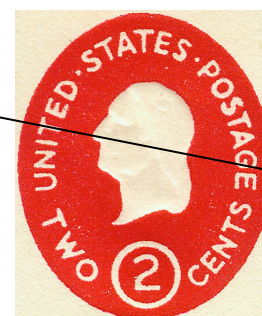


Dies 165 to 167



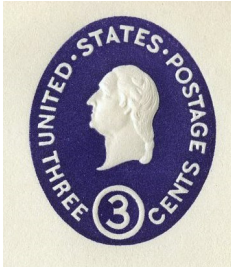
Die 166(C) Large head (9.4 mm from tip of nose to back of head); figure '2' as in Die 165; wide 'U'; bars of 'E' of 'STATES' of nearly equal length; short 'UN' of 'UNITED'; thin crossbar in 'A' of 'STATES'; line from the stem of 'T' in 'UNITED' through tip of nose touches 'E'.

2 Cents Die	Head size	'2' to bottom of circle	Circle to bottom of oval	Watermark				
				42	43	44	45	46
164	9	1.0	0.75	X		X	X	X
165	9	1.2	1.0				X	X
166	9.4	1.2	1.0	X	X	X	X	X
167	9.4	1.2	1.0		X		X	X

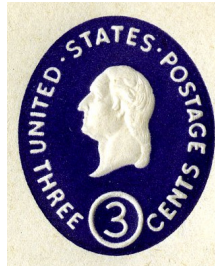


Die 167(D) Large head; tall 'UN' in 'UNITED'; thick crossbar in 'A' of 'STATES'; bottom bar of 'E' of 'STATES' slightly longer than other bars; line from stem of 'T' in 'UNITED' through tip of nose touches 'G'; otherwise like Die 166.

The Oval Dies of 1950 to 1964



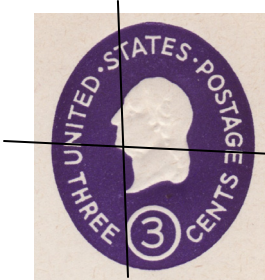
Die 168(A) Tall (4½ mm), thick figure '3' in thick circle; narrow 'E's' in 'THREE'; long top bars and short stems in 'T's' of 'STATES'; narrow 'U'. This die is not found on window envelopes.



Die 169(B) Tall (4½ mm), thin figure '3' in thin circle; narrow 'E's' in 'THREE' as before; wide 'U'; short top bars and long stems in 'T's' of 'STATES'. This die is not found on window envelopes.

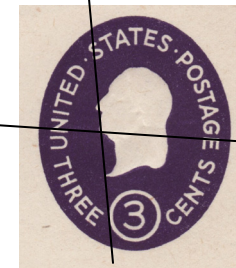


Die 170(C) Short figure '3' (4 mm) in thin circle; the 'E' in 'STATES' has a short center bar; wide 'U'. A line from the left vertical bar of the 'N' in 'UNITED' to the vertical bar of the 'E' in 'POSTAGE' passes below the chin of Washington. This die is not found on window envelopes.



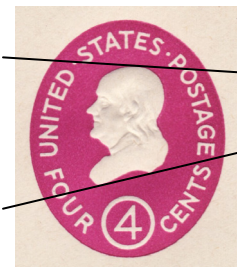
Sorting 3¢ dies

Dies 168 & 169 occur only on wmk 42 & 43 paper
Windows occur only with Dies 171 & 172
Ungummed flaps occur only with Die 171
1¢ Green type 12 surcharge does not occur on Die 168

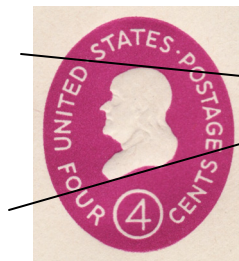


Die 171(D) Large letters; all three bars of the 'E' in STATES are the same length; wide 'U'; a line tangent to the circle around '3', touching the tip of the bust, intersects the 'T' in 'STATES'; normal crossbar of the 'A' in 'STATES'; a line from the left vertical bar of the 'N' in 'UNITED' to the vertical bar of the 'E' in 'POSTAGE' just touches the chin of Washington.

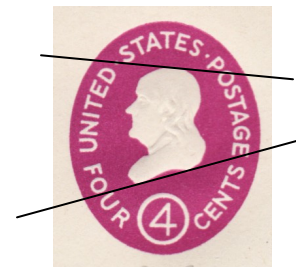
Die 172(E) Large letters; all three bars of the 'E' in 'STATES' are of the same length; a line tangent to circle around '3' and touching tip of bust intersects S in 'STATES'; early versions of Die 172(E) have a thick crossbar of the 'A' in 'STATES,' later ones do not; a line from the left vertical bar of the 'N' in 'UNITED' to the vertical bar of the 'E' in 'POSTAGE' just touches the chin of Washington.



Die 173(A) Circle around '4' low (1 mm from edge); line from dot between 'UNITED' and 'STATES' across Franklin's head barely touches 'O' of 'POSTAGE'. Line across bottom of Franklin's bust intersects 'O' of 'FOUR'; 2½ mm from bottom of second 'T' of 'STATES' to top of head; clearance between circle and bust is 2¼ to 2½ mm. This die is not found on window envelopes.

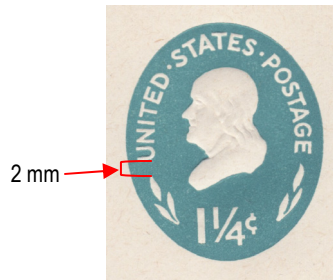


Die 174(B) Circle around '4' high (1.5 mm from edge). Short leg on 'P' of 'POSTAGE'. Line from dot between 'UNITED' and 'STATES' across top of Franklin's head bisects 'O' of 'POSTAGE'; line across bottom of Franklin's bust does not intersect 'O' of 'FOUR'; 3 mm from bottom of second 'T' of 'STATES' to top of head. Clearance between circle and bust is 2 mm.

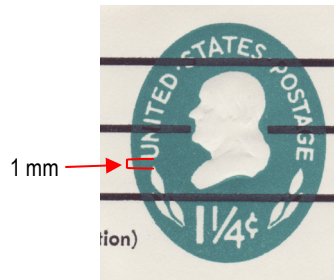


Die 175(C) Circle around '4' is high; long leg of 'P' of 'POSTAGE'; line from dot between 'UNITED' and 'STATES' across top of Franklin's head divides 'O' of 'POSTAGE' into thirds (one third above line - two thirds below line). Line across bottom of Franklin's bust does not intersect 'O' of 'FOUR'; 2½ mm from bottom of second 'T' of 'STATES' to top of head; clearance between circle and bust is 2 mm.

The Oval Dies of 1950 to 1964



Die 176(A) The '4' is 3 mm tall; smaller leaf cluster; upper leaf in left cluster is 2 mm from 'U' of 'UNITED'.



Die 177(B) The '4' is 3 1/2 mm tall; leaf clusters are larger; upper leaf in left cluster is 1 mm from 'U' of 'UNITED'.



Die 178(A) Single lock of hair in front of ear. Base of 2 of '1/2' is lower than base of large 2; indentation on top of head under second 'T' of 'STATES'; locks of hair above ear appear as four clumps.

Die 179(B) Two locks of hair in front of ear; base of 2 of '1/2' is on same plane as that of large '2'; indentation at top of head as Die 178, three small strands of hair are between lowest and highest locks which end in curved upsweep.

Die 180(C) Two locks of hair in front of ear; base of 2 of '1/2' is on same plane as that of large '2'; no indentation on top of head—it is a nearly straight line; two small strands of hair between lowest and highest end in a straight upsweep; nose line is straight and dips sharply into bridge of nose.

One master die was prepared for each of the 1 1/4¢ and 2 1/2¢ denominations. The two 1 1/4¢ and three 2 1/2¢ dies are each working dies (see history section of this catalog).



182(A) All bars of 'E' of 'STATES' of equal length; bars of 'F' of 'FIVE' are wide apart; 'F' far from 'I'; middle bar of 'E' of 'POSTAGE' is close to the top bar.



183(B) Bottom bar of 'E' of 'STATES' longest, others equal; 'F' of 'FIVE' far from the 'I'; stem of 'P' of 'POSTAGE' short.

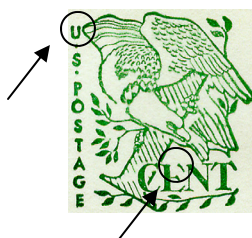


184(C) Middle bar of 'E' of 'STATES' is the shortest; bars of 'F' of 'FIVE' close and thick; 'F' of 'FIVE' close to 'I'; 'C' of 'CENTS' is high; large, "fat" head with blunt nose.

Surcharges used 1950 to 1984



Type 11 Surcharge

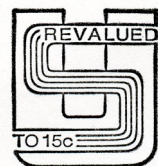


Type 12 Surcharge:
Large word 'CENT'; two shading lines in center of 'C' of 'CENT'; long angled serif on center bar of 'E.'

Type 12a Surcharge:
Similar to Type 12; right stand of 'U' short; top of letters 'C' and 'E' of 'CENT' broken.

Type 13 Surcharge: Small word 'CENT'; three shading lines in center of 'C' of 'CENT'; short vertical serif on center bar of 'E'.

Surcharges used in 1971 and 1978



Type 14 Surcharge:
'POSTAGE/REVALUED'

Type 15 Surcharge:
'REVALUED/TO 15c'

Dies of Modern Envelopes

Envelope listings are in numerical order by die number



Die 181



Die 185



Die 186



Die 187



Die 188



Die 189



Die 190



Die 191



Die 192



Die 193



Die 194



Die 195



Die 196



Die 197



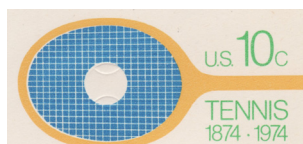
Die 198



Die 199



Die 200



Die 201



Die 202



Die 203



Die 204



Die 205



Die 206



Die 207



Die 208



Die 209



Die 210



Die 211



Die 212



Die 213

Dies of Modern Envelopes

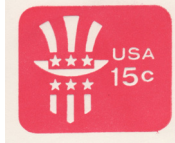
Envelope listings are in numerical order by die number



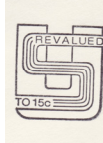
Die 214



Die 215



Die 216



Die 217



Die 218



Die 219



Die 220



Die 221



Die 222



Die 223



Die 224



Die 225



Die 226



Die 227



Die 228



Die 229



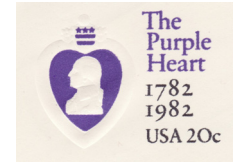
Die 230



Die 231



Die 232



Die 233



Die 234



Die 235



Die 236



Die 237



Die 238

Dies of Modern Envelopes

Envelope listings are in numerical order by die number



Die 239



Die 240



Die 241



Die 242



Die 243



Die 244



Die 245



Die 246



Die 247



Die 248



Die 249



Die 250



Die 251



Die 252



Die 253



Die 254



Die 255



Die 256



Die 257



Die 258



Die 259



Die 260



Die 261



Die 262

Dies of Modern Envelopes

Envelope listings are in numerical order by die number



Die 263



Die 264a 49x38 mm
Die 264b 53x44 mm



Die 265



Die 266



Die 267



Die 268



Die 269



Die 270



Die 271



Die 272
Yellow flagpole



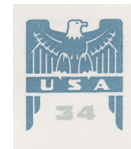
Die 272a security
Blue Flagpole



Die 273



Die 274



Die 275



Die 276



Die 277



Die 278



Die 279



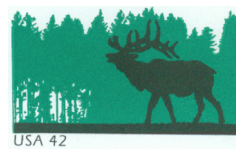
Die 280



Die 281



Die 282



Die 283



Die 284

Dies of Modern Envelopes

Envelope listings are in numerical order by die number



Die 285 2009 on bell crown
Die 285a 2011 on bell crown



Die 286a 48.4x32.5 mm
Die 286b 50.1x35.0 mm



Die 287a 37.9x34.2 mm
Die 287b 40.6x38.4 mm



Die 288



Die 289



Die 290



Die 291



Die 292



Die 293



Die 294



Die 295



Die 296